



PATHFINDER

A NEWSLETTER SERIES FOR SUFFOLK'S GLOBAL STUDENT COMMUNITY



VISION FOR PATHFINDER

BY AKI VIVEKANANDAN

Pathfinder is more than a newsletter, it is a reflection of what it means to begin again, thousands of miles from home, and still choose to lead. Created and written by a first-generation student turned triple Suffolk degree holder and now Assistant Director of Global Career Strategy & Partnerships, Pathfinder is both a personal project and a collective promise: to honor the courage, resilience, and potential of every international student whose story is still being written.

This monthly publication will offer insight, community, and guidance for Suffolk's valuable global student community through success stories, immigration and career updates, student spotlights and cross-campus collaboration. The first issue in this series is a letter to those who came far, work hard, and continue pioneering.

PATHFINDER: ISSUE 1

TABLE OF CONTENTS

An Ode to the Pathfinder in You • P. 2

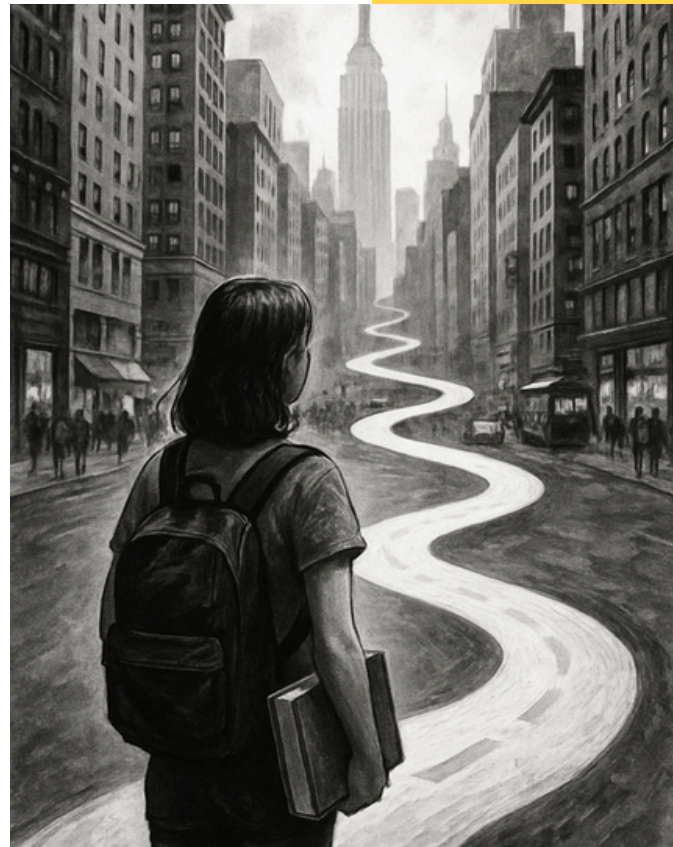
Have your voice heard • P. 3

Career Insights Corner • P. 4

Upcoming Events • P. 4

AN ODE TO THE PATHFINDER IN YOU

Nearly a decade ago, I packed my life into two suitcases and a carry-on, said goodbye to everything familiar, and boarded a one-way flight to Boston. I wasn't chasing adventure. I was chasing possibility. Like many of you, I arrived with a mix of excitement, fear, and the weight of my family's hopes folded neatly between my clothes. I knew it wouldn't be easy, but I didn't yet understand how much strength it would take to rebuild a life from scratch. There were nights when I questioned why I left behind a world where support came effortlessly. But looking back now, I realize that decision changed everything. Today, I get to write this for you, for those navigating the same unknowns and wondering whether they made the right choice. You did. You are braver than you think.



I still remember my first Halloween on campus, realizing I would be celebrating Diwali over FaceTime with my family while my friends dressed up for Halloween. That moment reminded me that belonging does not always mean blending in. Sometimes, it means creating space for your traditions in a place that has yet to recognize them. Over time, I learned to see October through two lenses: one filled with pumpkin spice, costumes, and crisp fall air, and the other illuminated by the glow of small flickering lights, the sound of familiar music, and the comfort of homemade food that carried fragments of my past life into this new one.

Acclimatizing to a new culture requires far more than flexibility. It calls for sustained mental energy, quiet perseverance, and a deep sense of self-awareness. Each day you spend adjusting, learning to communicate, think, and act within a different cultural rhythm while still honoring who you are, reflects remarkable strength. It takes courage to exist between worlds, to navigate systems that may not always understand your story, and to keep showing up with authenticity.

This series is a small but intentional part of a larger effort at Suffolk University to remind you that you are seen, heard, and valued as you build your academic and professional journey. It is also an acknowledgment of the grace and resilience you demonstrate each day while shaping not only your future but also the evolving story of what it means to be an international student in today's world.

We may not always have the answers, but we are here to help you find the people and pathways that can guide you forward. At the Career Center, we understand that navigating new systems, policies, and expectations can feel overwhelming at times. What never changes is our deep admiration for your willingness to begin again, to keep learning, and to build a life that reflects your values and dreams.

Every time you rise after a setback or choose to stay curious in the face of uncertainty, you are finding new paths for others who will follow in your footsteps. You are redefining what it means to belong, to persist, and to create possibility far from home. Your courage reminds us why we do what we do. Even after you graduate and move on to new cities, new careers, and new milestones, know that Suffolk will always be your home away from home.

We are proud to walk beside you, to celebrate your journey, and to witness the incredible story you continue to write. You are the trailblazer and the pathfinder in this story, one whose strength, openness, and determination light the path for many more to come.

HAVE YOUR VOICE HEARD: HELP SHAPE THE NEXT PATHFINDER EVENT

As part of this initiative, we are designing a Spring 2026 Signature International Student Panel: a collaborative event highlighting the real challenges, achievements, and perspectives of Suffolk's global community.

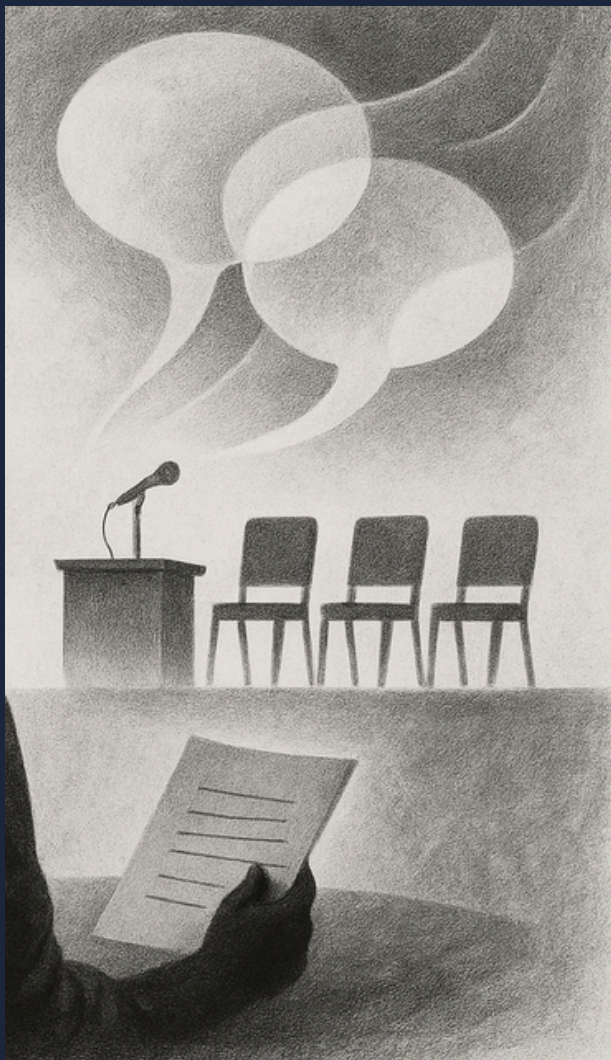
To ensure this event reflects your experiences and priorities, we invite you to take a short, two-minute survey.

Your responses will help us identify the topics, speakers, and stories that matter most to you—from navigating job searches and immigration pathways to building belonging and confidence in new spaces.

Every voice matters! Whether you are a first-year student or preparing for graduation, your input will directly shape the conversation that helps future international students thrive.

CLICK TO SEE THE POWER OF YOUR VOICE

2 minute survey- shape the next Pathfinder event



CAREER INSIGHTS CORNER

SMALL STEPS, BIG SHIFTS

October is the perfect time to reflect on your journey and take small, intentional steps toward your career goals. Here are three simple ways to begin building momentum:

1. Clarify your story. Start updating your resumé or LinkedIn profile to reflect the unique strengths that come from being globally educated and adaptable.
2. Explore early. Attend at least one ISSO or INTO workshop or networking event this month, even if you're unsure where to begin. Exposure often creates clarity.
3. Seek guidance. Schedule a quick appointment with your Industry Advisor to get feedback on your career plan or talk through next steps or with me as your Equity and Access Advisor if you would like to navigate identity-based barriers.

Remember: progress doesn't always look like big leaps; it often begins with consistent, quiet effort. You are already doing the hardest part by showing up.

UPCOMING EVENTS

NAVIGATING CAREERS ACROSS BORDERS

Monday, November 10th | 3:00-5:00 PM |
120 TREMONT STREET, SARGENT HALL
4th FLOOR, ROOM 495F, FACULTY DINING ROOM

This event will feature a panel of professionals who have firsthand experience as international students and have successfully navigated the complexities of working in the U.S. and abroad.

INTERNATIONAL STUDENTS CAREER ADVISING DROP-INS

Tuesday, November 4th | 12:30-1:30 PM |
73 TREMONT STREET, STAHL BUILDING
4th FLOOR, INTO SUFFOLK CENTER

Stop by to get quick help with résumés, cover letters, or interview prep. No appointment needed.

OPT Workshop: ISSO ft. Career Center

October: 14th, 16th, 21st & 23rd | 12:30-1:30 PM |
73 TREMONT STREET, STAHL BUILDING
9TH FLOOR, ROOM 9077 & ZOOM

Learn about OPT rules and regulations from ISSO and about important career center resources.



AKI VIVEKANANDAN

**BOOK YOUR APPOINTMENT
WITH ME**

EMAIL ME: If you want to share your story in the next issue of Pathfinder or if you would like to share your feedback.